

Biotinylated Human Claudin 6 Nanodisc

Cat. No. CLD-HM16NB



Description

Source	Recombinant Biotinylated Human Claudin 6 Nanodisc is expressed from HEK293 with His tag at the C-terminus. It contains Met1-Val220.
Accession	P56747
Molecular Weight	The protein has a predicted MW of 36.20 kDa.
Endotoxin	Less than 1 EU per µg by the LAL method.

Formulation and Storage

Formulation	Supplied as 0.22 µm filtered solution in PBS, 200mM L-Arginine (pH 7.4). Notice: Not recommended for flow cytometry in mammalian cells.
Storage	Valid for 6 months from date of receipt when stored at -80°C. Recommend to aliquot the protein into smaller quantities for optimal storage. Please minimize freeze-thaw cycles.

Background

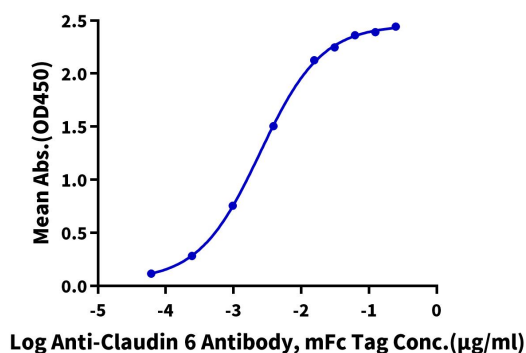
Claudin-6 is a multipass transmembrane protein in the Claudin family. Claudin-6 is expressed by epithelial cells where it participates in tissue development and the maintenance of tight junction integrity. Human Claudin-6 shares 88% and 86% amino acid sequence identity with mouse and rat Claudin-6, respectively.

Assay Data

ELISA Data

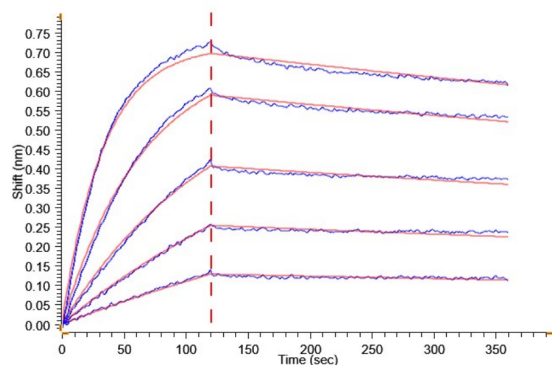
Biotinylated Human Claudin 6 Nanodisc, His Tag ELISA

0.1µg Biotinylated Human Claudin 6 Nanodisc, His Tag Per Well



Immobilized Biotinylated Human Claudin 6 Nanodisc, His Tag at 1µg/ml (100µl/well) on the streptavidin precoated plate (5µg/ml). Dose response curve for Anti-Claudin6 Antibody, mFc Tag with the EC₅₀ of 2.5ng/ml determined by ELISA (QC Test).

BLI Data



Loaded Biotinylated Human Claudin 6 Nanodisc, His Tag on Streptavidin-Biosensor can bind Anti-Claudin6 Antibody, mFc Tag with an affinity constant of 0.35 nM as determined in BLI assay (Gator® Prime).